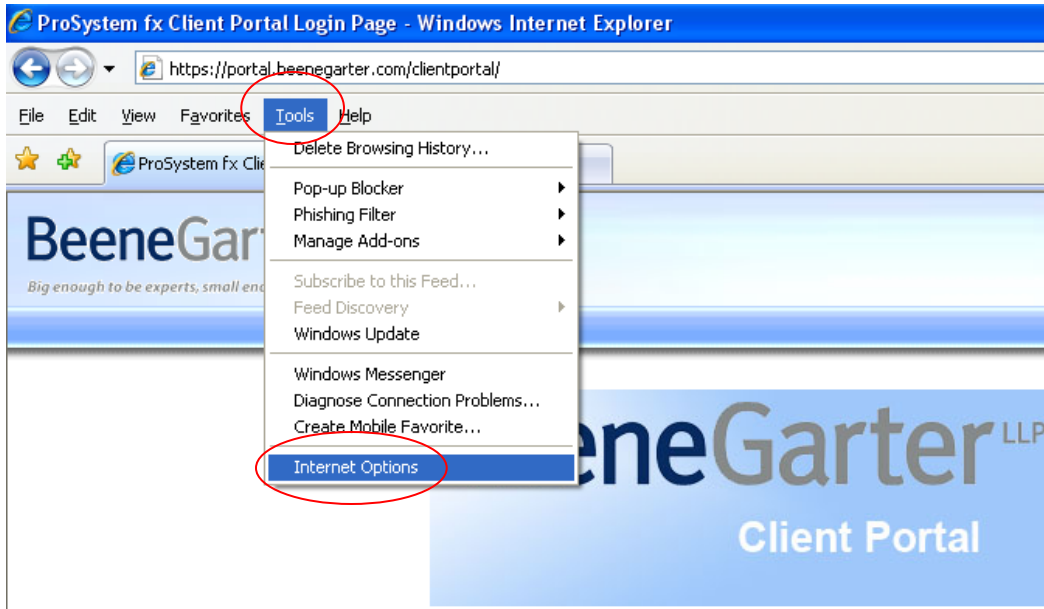
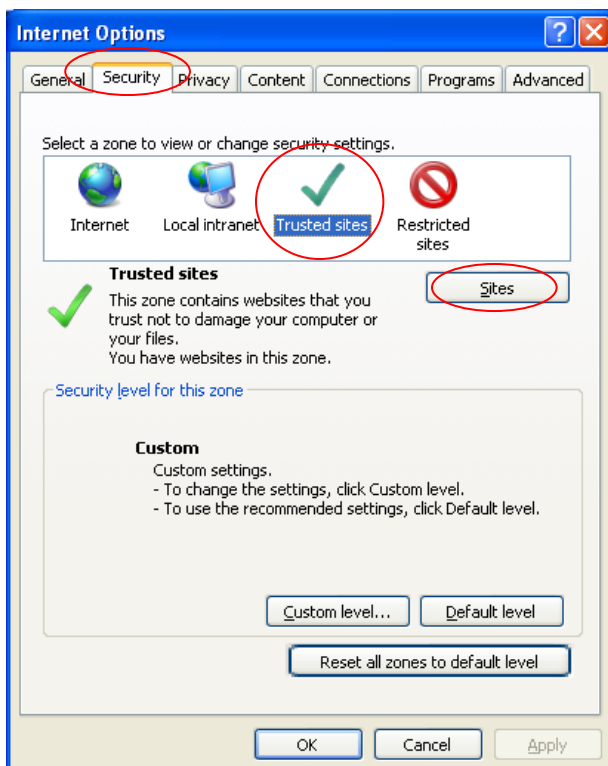


INTERNET EXPLORER SETTINGS – HELPFUL HINTS FOR ACCESSING THE BEENE GARTER CLIENT PORTAL

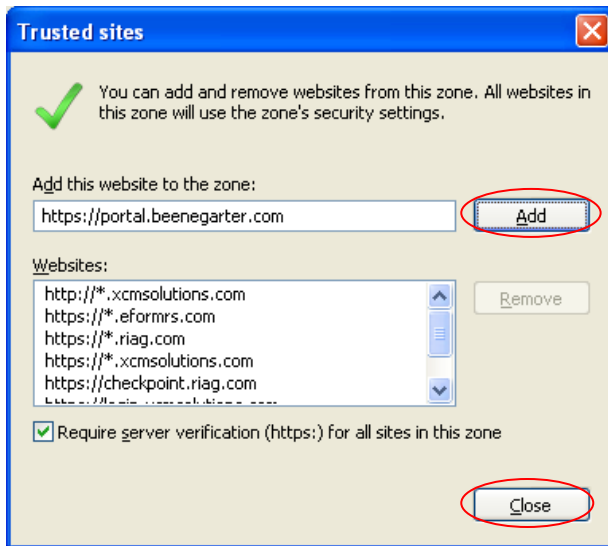
1. Go to the Beene Garter Portal (<https://portal.beenegarter.com/clientportal/>) and add it to the Trusted Sites of Internet Explorer as follows:
 - a. From the menu, choose **TOOLS**
 - b. Click on **INTERNET OPTIONS**



- c. Click on **SECURITY** Tab
- d. Click on **TRUSTED SITES**
- e. Click on **SITES** button

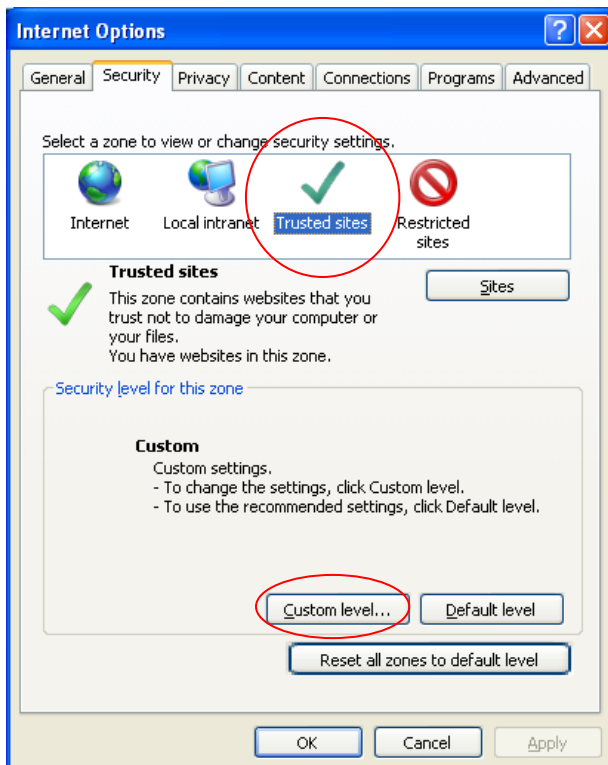


- f. The Portal web address should already be in the **Add this website to the zone:** area
- g. Click on **ADD**
- h. Click on **CLOSE**

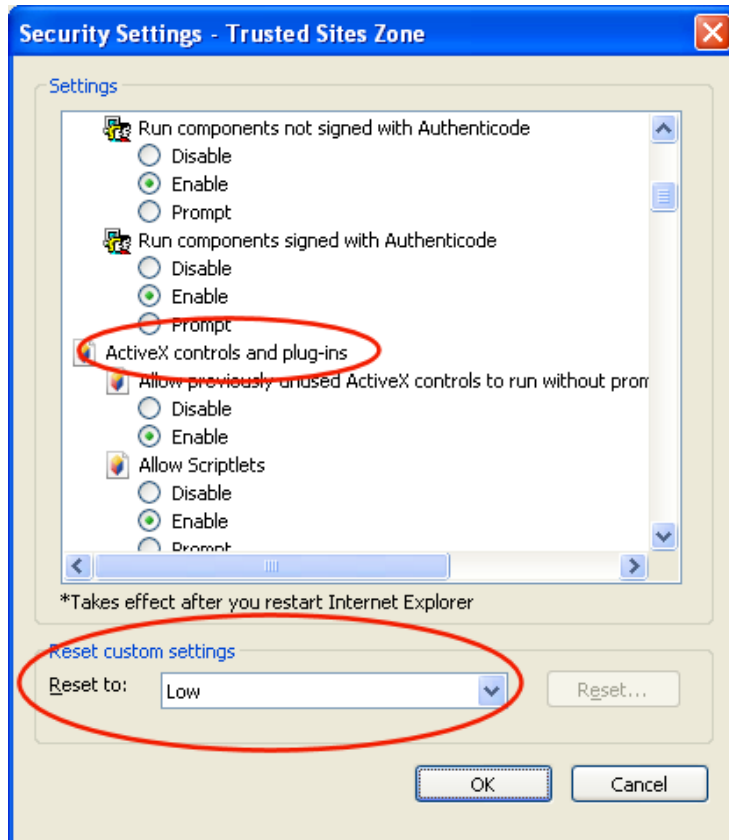


2. Set the Security level for the Trusted Sites as follows:

- a. While **TRUSTED SITES** is still selected, Click the **CUSTOM LEVEL** button in the Security level area



- b. In **Settings**, locate the section **ACTIVEX CONTROLS AND PLUG-INS** and change every sub-entry (approximately 10) under that heading to **ENABLE**
- c. Next to **Reset to:** change the value to **LOW** (NOTE: this only applies to the Trusted Sites, not all security on your computer)



- d. Click **OK** and **OK** again
3. The Portal also requires that Microsoft .Net 2.0 & 3.0 be installed, which will already be on most PC's through the computer's Automatic Updates feature. If your PC does not have it, it can be downloaded & installed manually from Microsoft's website:
 - a. DotNet 2.0: <http://www.microsoft.com/downloads/details.aspx?displaylang=en&FamilyID=0856each-4362-4b0d-8edd-aab15c5e04f5> and click the Download button & run the program after it's downloaded
 - b. DotNet 3.0: <http://www.microsoft.com/downloads/details.aspx?displaylang=en&FamilyID=10cc340b-f857-4a14-83f5-25634c3bf043> and click the Download button & run the program after it's downloaded.